



# Environmental, Social and Governance (ESG) Data Management.

March 29, 2022

Meghan Foley – Principal Consultant, Trinity Consultants  
Scott Walton - SGNA Regional EHS Manager, Saint-Gobain North America



[trinityconsultants.com](http://trinityconsultants.com)

## Scott Walton, CSP, CHMM, Regional EHS Mgr



**Scott W. Walton, CSP, CHMM**

SGNA Regional EHS Manager  
Saint Gobain North America  
M: (859) 512-6495  
Email: [scott.walton@saint-gobain.com](mailto:scott.walton@saint-gobain.com)

- ▶ Thomas More College, NKY
- ▶ 32 years in EHS
- ▶ Broad experience in EHS Management Systems, safety training, risk management, industrial hygiene, environmental compliance, permitting, remediation, inspections and auditing, and sustainability.
- ▶ Worked 15 years in Cincinnati in consulting prior to joining the building materials manufacturing industry.
- ▶ Have served various roles serving various industries with EHS compliance and continuous improvement. Currently supporting manufacturing plants across North America.

## Presenters: Meghan Foley, Principal Consultant



**Meghan Foley**  
Principal Consultant

Mobile: 248-672-5670

Email: [mfoley@trinityconsultants.com](mailto:mfoley@trinityconsultants.com)

- ▶ B.S. / M.S. Civil Engineering – University of Toledo
- ▶ 15 Years in Environmental Consulting
- ▶ Experience with broad variety of industries including manufacturing (automotive/aerospace, forgeries and foundries, other heavy industrial, and light industrial), chemical, refining, natural gas, power, pharmaceutical, etc.
- ▶ ESG-Related Experience:
  - Life Cycle Analysis
  - Corporate and external sustainability reporting
  - Digitizing Sustainability Reporting
  - Annual reporting data collection and validation
  - GHG Calculations
  - Life Cycle Analysis



# Agenda

- 1. ESG Overview, Drivers, Frameworks  
Targets and Scope 3 emissions**
- 2. Poll**
- 3. Connection to Traditional EHS**
- 4. Data Management Challenges and  
Solutions**
- 5. Steps to Digitizing ESG**
- 6. Best Practices and Lessons Learned**

## Audience Poll



**How many have more than 10 people working on sustainability .**

**Vs whose corporation rather delegates and spreads the ESG workload to existing staff.**

# Trinity Services Overview



## Trinity Consultants

Started in 1974 by **one consultant** in Dallas, Texas serving clients' **air quality** regulatory compliance needs.

Today, we are **nearly 1,000 employees** in more than **70 locations** on **four continents**.

We help organizations overcome complex, mission-critical **EHS, engineering, and science** challenges through **consulting, technology, training, and staffing** support.

# Trinity Consultants International Presence

## North America



- EHS Consulting
- SafeBridge Regulatory Life Sciences Group
- Minnow Aquatic Environmental Services
- Ecological Assessment Services
- Advent Engineering Life Science Solutions
- Provenance Process Safety Management Services
- Vision Environmental
- WorkingBuildings
- AWN Consulting
- Sespe Consulting

## Europe

England, UK | Dublin, IE



## Asia

China | Singapore



## Australia

Queensland | New South Wales





# Environmental Health & Safety Consulting Services

## AIR QUALITY



Air quality permitting and compliance support with federal and state/local regulatory requirements.



## CLIMATE CHANGE & SUSTAINABILITY

Comprehensive climate change and sustainability program support to companies across many industries.



## EHS MANAGEMENT

Trinity's EHS Performance & Risk Management team assists in addressing EHS challenges from various perspectives - strategic planning, program evaluation, and systems development.



## WASTE MANAGEMENT

Provides regulatory waste management support for industrial facilities.

## CHEMICAL COMPLIANCE

Compliance support for chemical-related compliance and reporting requirements.



## EHS LITIGATION SUPPORT

Provides technical support and expert testimony for legal issues regarding air quality, noise impact, industrial air quality and weather-related litigation.



## HEALTH AND SAFETY

Support with OSHA, EPA, and local/state agencies regulations that protect the health and safety of workers and surrounding communities.



## WATER QUALITY

Water quality permitting, compliance, and sampling.



# Trinity's Climate & Sustainability Services

## ▶ Enterprise Climate and Sustainability Strategy Development

- Evaluating conformance with established reporting and disclosure frameworks
- Benchmarking corporate ESG performance and disclosure
- Developing sustainability and / or climate change policy, strategy, programs, and implementation plans
- Establishing key performance indicators, targets, and goals

## ▶ Program Implementation & Management

- GHG Emissions & Carbon Reduction Management
- Non-GHG Air Quality Management
- Energy Management
- Water & Wastewater Management
- Waste & Hazardous Materials Management
- Life Cycle Analysis (LCA) and Product Carbon Footprint

## ▶ Disclosure & Reporting Services

- Data Compilation for Various Disclosure Frameworks
- CDP Verification & Disclosure
- California 3<sup>rd</sup>-Party GHG Verification
- Internal Stakeholder Reporting Support



# Benefits of the Trinity Relationship



## Decades of Air Quality

Established reputation for excellence in providing air quality and environmental management services for clients across a broad range of industrial sectors nationwide.

## GHG Emission and Mitigation Expertise

In-depth understanding of GHG emission sources and calculation methodologies in broad range of manufacturing industries, including roofing manufacturing.

## Strategic Approach

Subject matter experts with experience in developing climate strategies with prioritization of company goals and business objectives to ensure client satisfaction.

## Regulatory Expertise

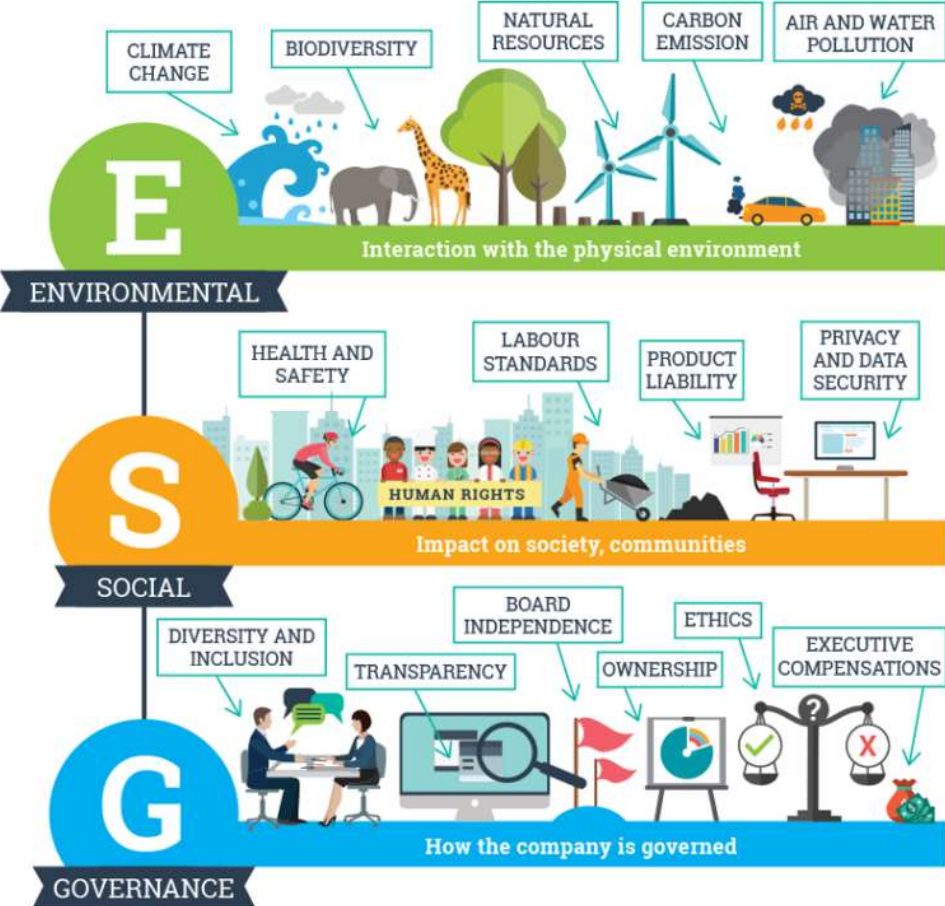
Expertise in staying abreast of and understanding the implications of emerging regulations and policies that impact our clients at the national and local/state level.

## Technical Expertise

Demonstrated capabilities to perform engineering analyses to assess technical and economic feasibility of control/reduction options for emissions sources.

# ESG Overview and Drivers

# What is Environmental Social Governance (ESG)?



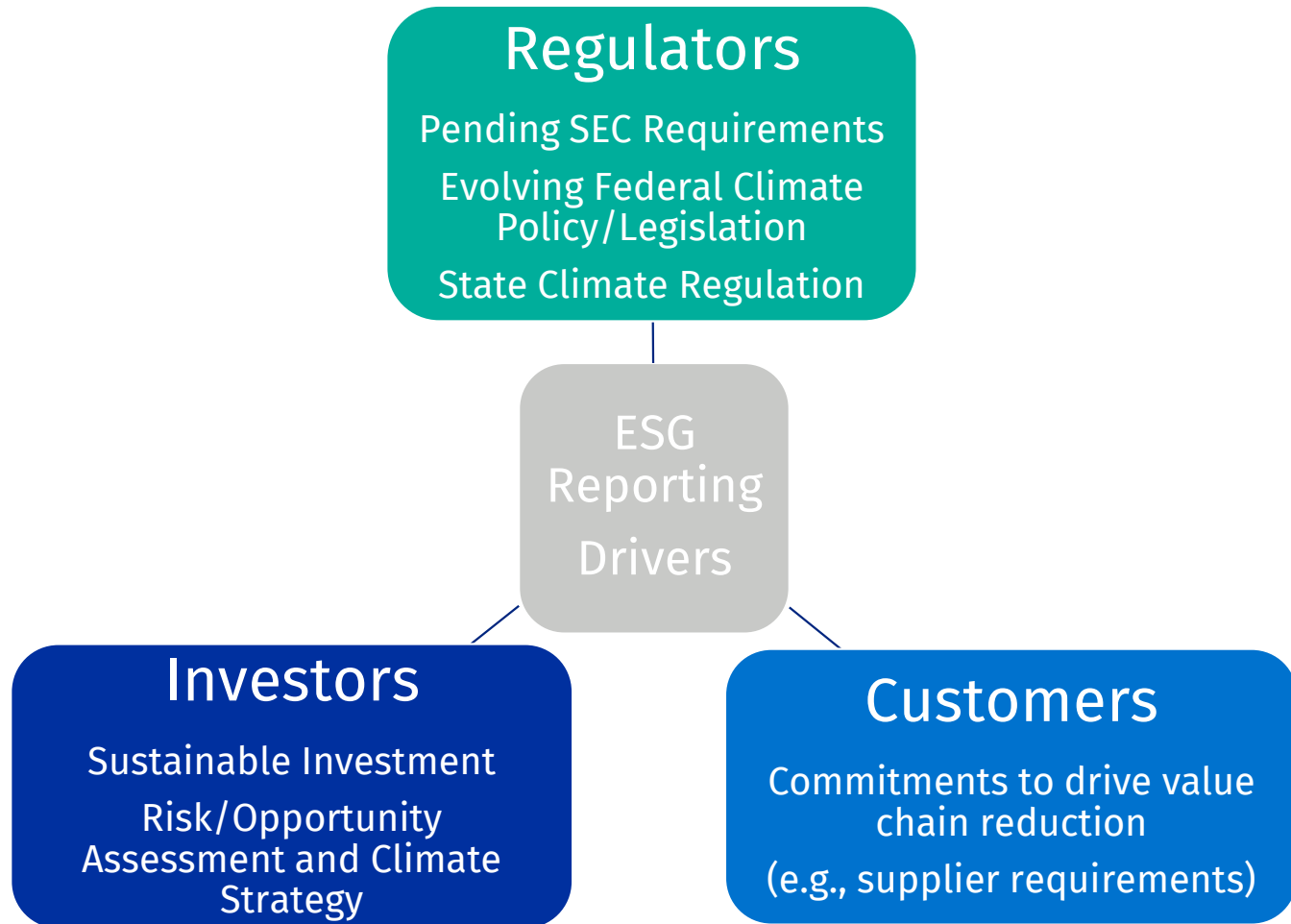
What kind of impact is your company having on the environment?

What kind of relationships does your company have with the people in its ecosystem?

How does the board of directors run the company?

Reference: The Impacter.











# Drivers for ESG Reporting



# Customer Drivers Example: Ford Motor Company

## Our Sustainability Aspirations

We are working to revolutionize mobility, fueled by new challenges and the desire to help build a better world for everyone.

 <b>Climate Change</b> Achieve carbon neutrality by 2050	 <b>Air</b> Attain zero emissions from our vehicles and facilities	 <b>Energy</b> Use 100 percent local, renewable electricity in all manufacturing by 2035	 <b>Waste</b> Reach true zero waste to landfill across our operations Eliminate single-use plastics from our operations by 2030	 <b>Water</b> Make zero water withdrawals for manufacturing processes Use freshwater only for human consumption
 <b>Materials</b> Utilize only recycled or renewable content in vehicle plastics	 <b>Safety</b> Work toward a future that is free from vehicle crashes and workplace injuries	 <b>Human Rights</b> Source only raw materials that are responsibly produced	 <b>Diversity, Equity and Inclusion</b> Create a truly diverse culture where everyone feels like they belong	 <b>Access</b> Drive human progress by providing mobility and accessibility for all

# Impacts to Ford's Value Chain

- ▶ Ford's **Supplier Code of Conduct** requires suppliers to:
- ▶ Protect and Respect Human Rights
- ▶ **Protect the Environment**
- ▶ Responsibly Source Materials
- ▶ Maintain Responsible Business Practices



## OUR SUPPLIERS:

Comply with or exceed Ford's environmental requirements and policies, including all relevant national, regional, environmental, and chemical legislation. All Tier 1 manufacturing, assembly, and Ford Customer Service Division suppliers must:

- Maintain an environmental management system **certified to ISO 14001** through an accredited third-party registrar.

**Minimize their impact on climate change aligned with the United Nations Framework Convention on Climate Change (Paris Climate Agreement), striving towards carbon neutrality. Our suppliers are required to:**

- Report their Scope 1, 2, and 3 emissions and water usage data to Ford if requested.
- Establish science-based GHG reduction targets, action plans, and transparent reporting mechanisms.

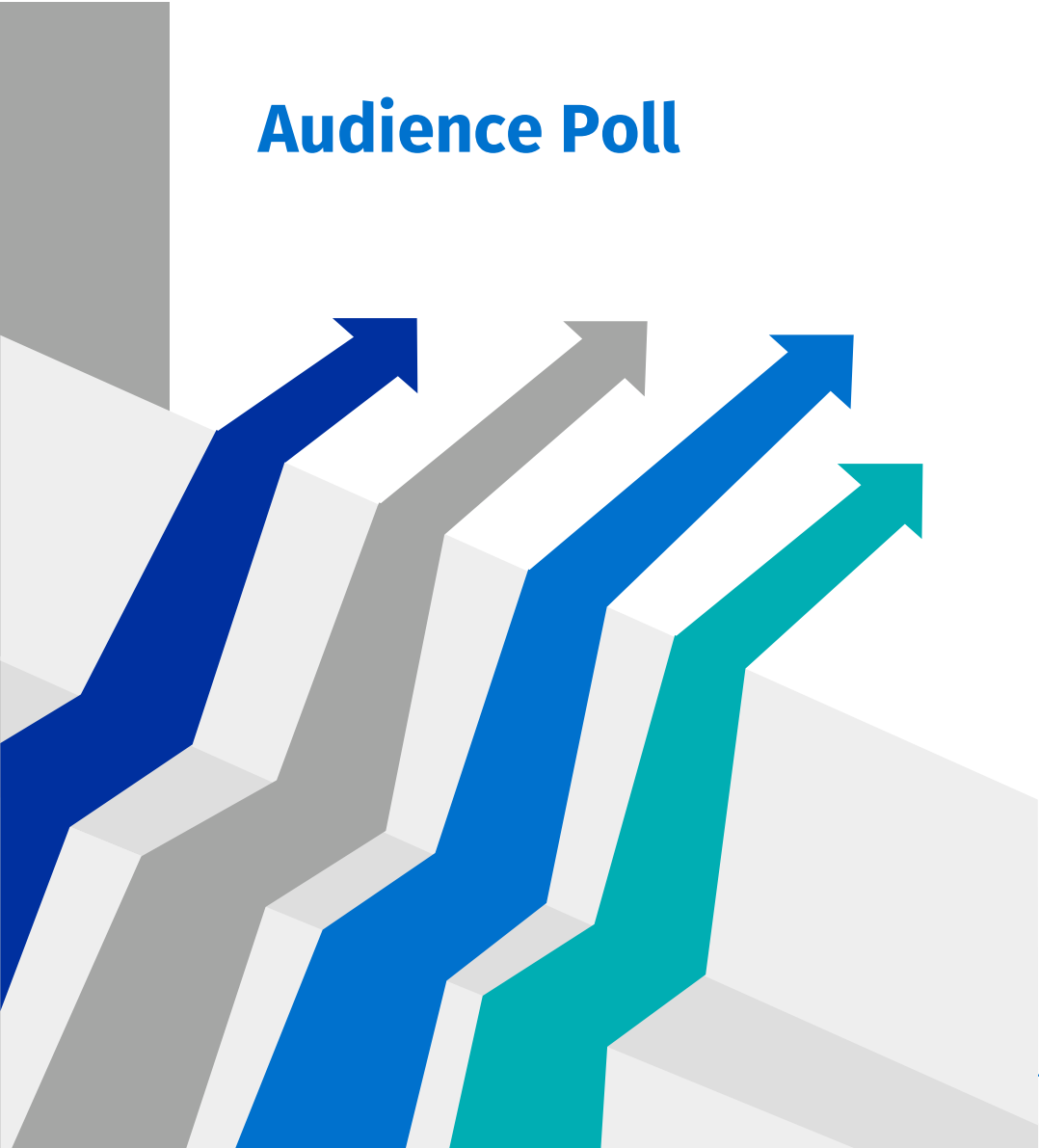


## What's New...and what is not.

- Data collected/Metrics are similar today
- Increased focus, attention, and sometimes funding
- Look for more rigorous data validation and verification
  - Last year trends – this year specific site data
  - Benchmarking
  - Ratios



# Audience Poll

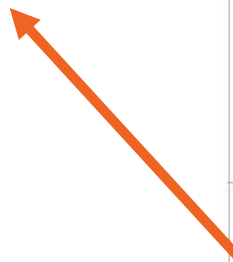


How many are familiar with ESG

# ESG Reporting Framework and Metrics

# ESG Ratings, Frameworks, & More

Frameworks
GRI
CDP
SASB
TCFD
WDI
Climate Disclosure Standards Board (CDSB)
UN Principles for Responsible Investment (PRI)
UN Sustainable Development Goals (SDG)



<b>ESG rating</b>	A scored or graded evaluation of a company based on an assessment of its performance on ESG issues.
<b>ESG index</b>	A group of stocks tracked by ESG performance, used to research investments and create ETFs and other investment products.
<b>ESG benchmark</b>	An assessment of an organisation's ESG performance as compared to its peers and/or competitors, usually accompanied by recommendations for improving performance.
<b>ESG ranking</b>	A list of companies ordered or grouped based on relative ESG performance according to specified ESG metrics.
<b>ESG framework</b>	Standards used to guide the reporting and disclosure of ESG metrics by an organisation. Frameworks are created and maintained by various nonprofits, NGOs, and industry groups.

Reference: <https://www.rio.ai/guide-esg-ratings>; <https://www.forbes.com/sites/betsyatkins/2020/06/08/demystifying-esgits-history--current-status/?sh=b58d3f42cdd3>; <https://corpgov.law.harvard.edu/2020/06/22/the-rise-of-standardized-esg-disclosure-frameworks-in-the-united-states/>.

# Overview of Scopes

<i>Emissions type</i>	<i>Scope</i>	<i>Definition</i>	<i>Examples</i>
<b>Direct emissions</b>	Scope 1	Emissions from operations that are owned or controlled by the reporting company	Emissions from combustion in owned or controlled boilers, furnaces, vehicles, etc.; emissions from chemical production in owned or controlled process equipment
	Scope 2	Emissions from the generation of purchased or acquired electricity, steam, heating, or cooling consumed by the reporting company	Use of purchased electricity, steam, heating, or cooling
<b>Indirect emissions</b>	Scope 3	All indirect emissions (not included in scope 2) that occur in the value chain of the reporting company, including both upstream and downstream emissions	Production of purchased products, transportation of purchased products, or use of sold products

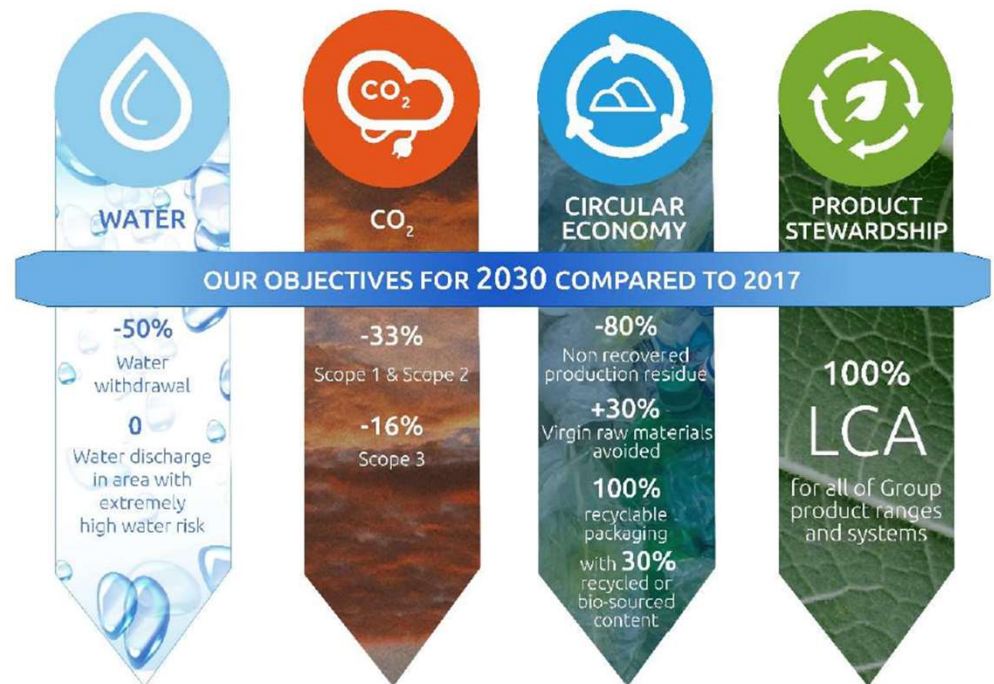
# Saint-Gobain Targets



## 2025 Targets



## 2030 Targets



# Example Carbon Neutral Targets

## Amazon

- Net Zero Carbon by 2040
- 100% Renewable Energy by 2025
- 50% Shipment Zero by 2030

## WalMart

- SBT – Reduction of 18% by 2025
- Zero Emissions by 2040 (without offsets)

## AT & T

- Reduce absolute Scope 1 & Scope 2 GHG 26% by 2030
- Ensure 50% of suppliers set SBTs on Scope 1 & 2 by 2024
- Carbon Neutrality by 2035

## Ford Motor Co.

- Reduce CO<sub>2</sub> from manufacturing by 30% per vehicle produced by 2025
- Carbon Neutrality by 2050

## Boeing

- Carbon Neutral Growth from 2020
- Reduce carbon emissions 50% over 2005 levels by 2050

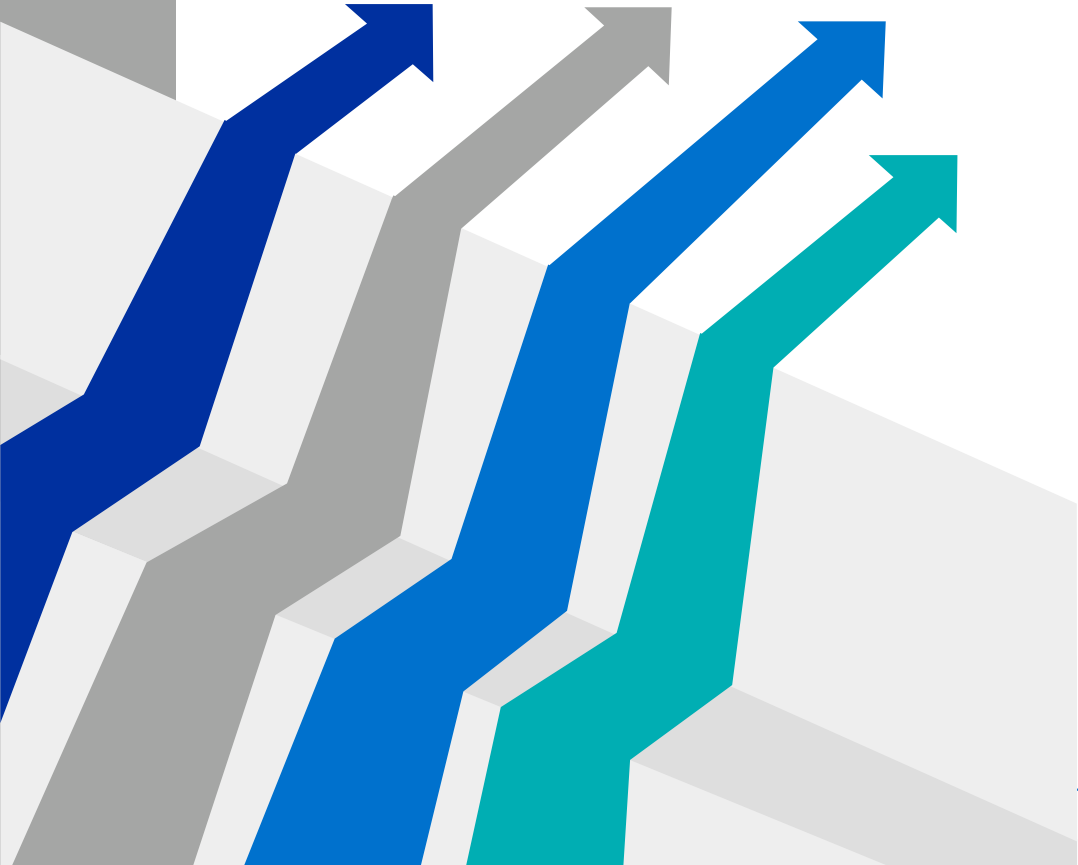
## What does this mean for data collection and Management?

- Volume, Velocity, Variability
- Multiple calculation methods
- Data Validation / Verification Evidence
- Internal leaders interested in managing progress against targets





# Audience Poll



How many have CSR officers their company

# Data Management

## Data Collection Challenges

- Who has the answers and what sources do we trust.
  - Electricity/Energy, Waste, Water usage etc.
- Definitions
- Units of measure
- Data Management
- Emissions Factors
- Frequency of data

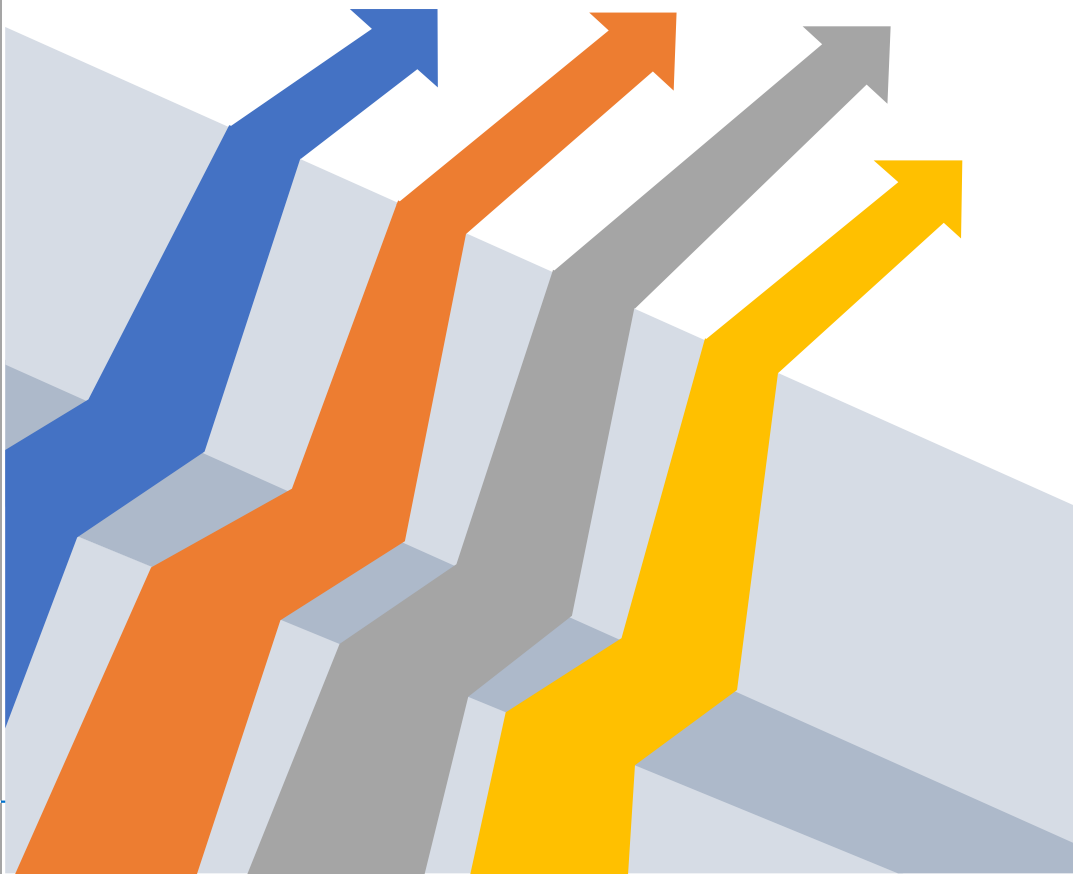




## What has Saint-Gobain Done Historically?

- Case Study on Need for Data Management
  - Lafarge
    - Enterprise-wide System, custom database
  - Continental Building Products
    - Quickbase program (Intuit) programmed to be a homegrown system for data collection and aggregation
    - Benchmark
- Saint Gobain
  - Enterprise-wide Systems (Enablon, Benchmark)
    - Centralized system for collecting ESG data.
    - Manages ESG calculations there
    - Conversation etc. done by the Sustainability report.

## Data Management Solutions and Best Practices



- Data Management system with built in Conversions.
- Defined emissions factors
- Reference tools with training
- Site Specific Procedure
- Benchmarking ratios

# How Digital Tools Help Manage Sustainability Programs

## DATA QUALITY ASSURANCE CHECKS

Automated quality checks of data to flag anomalies and address issues proactively

## AUTOMATE DATA COLLECTION

Integrations and automated data pulls/pushes from existing systems eliminates duplicative data collection efforts and reduces risk of errors



## DATA ANALYTICS

Advanced data analytics to provide meaningful and real-time insights into progress towards ESG related targets and goals

## STANDARDIZATION

Best practices for implementing digital tools encourages standardization which ultimately reduces organizational risk



## VERIFICATION

Digital tools support standardization of data and ability to more easily verify data and audit ESG programs

# Software Partnerships

Notable Mention

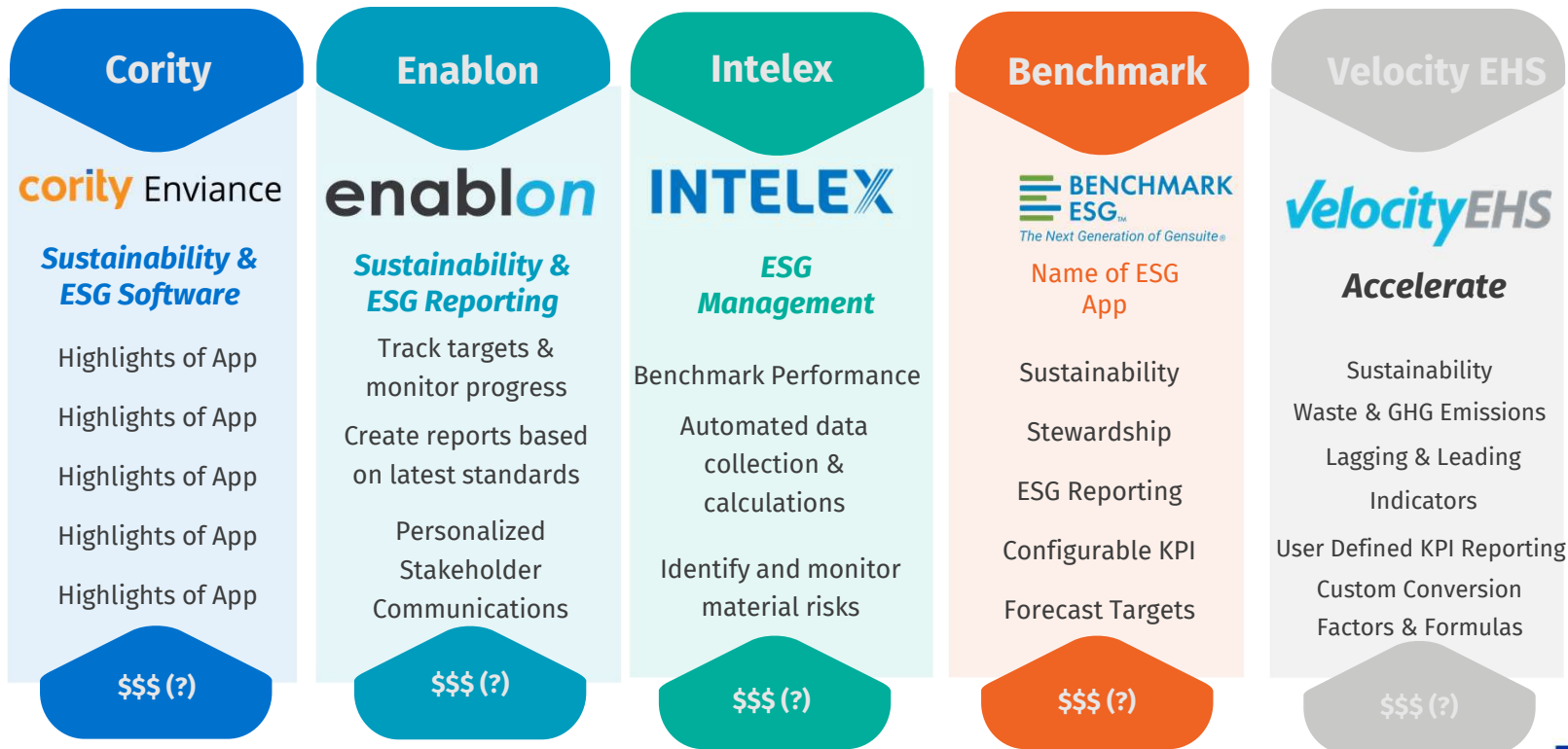
Tennaxia  
Providing sustainable performance

Microsoft 365

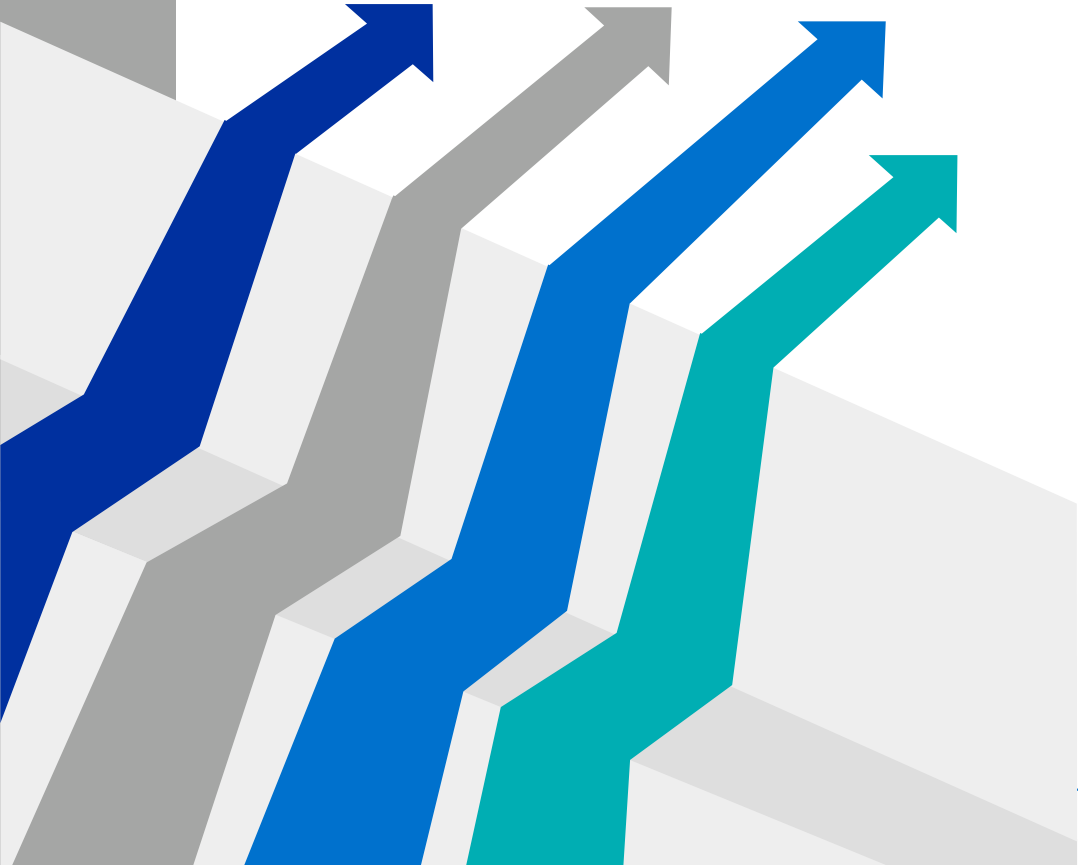
ACCUVIO

enVIZI

WeSustain



# Audience Poll

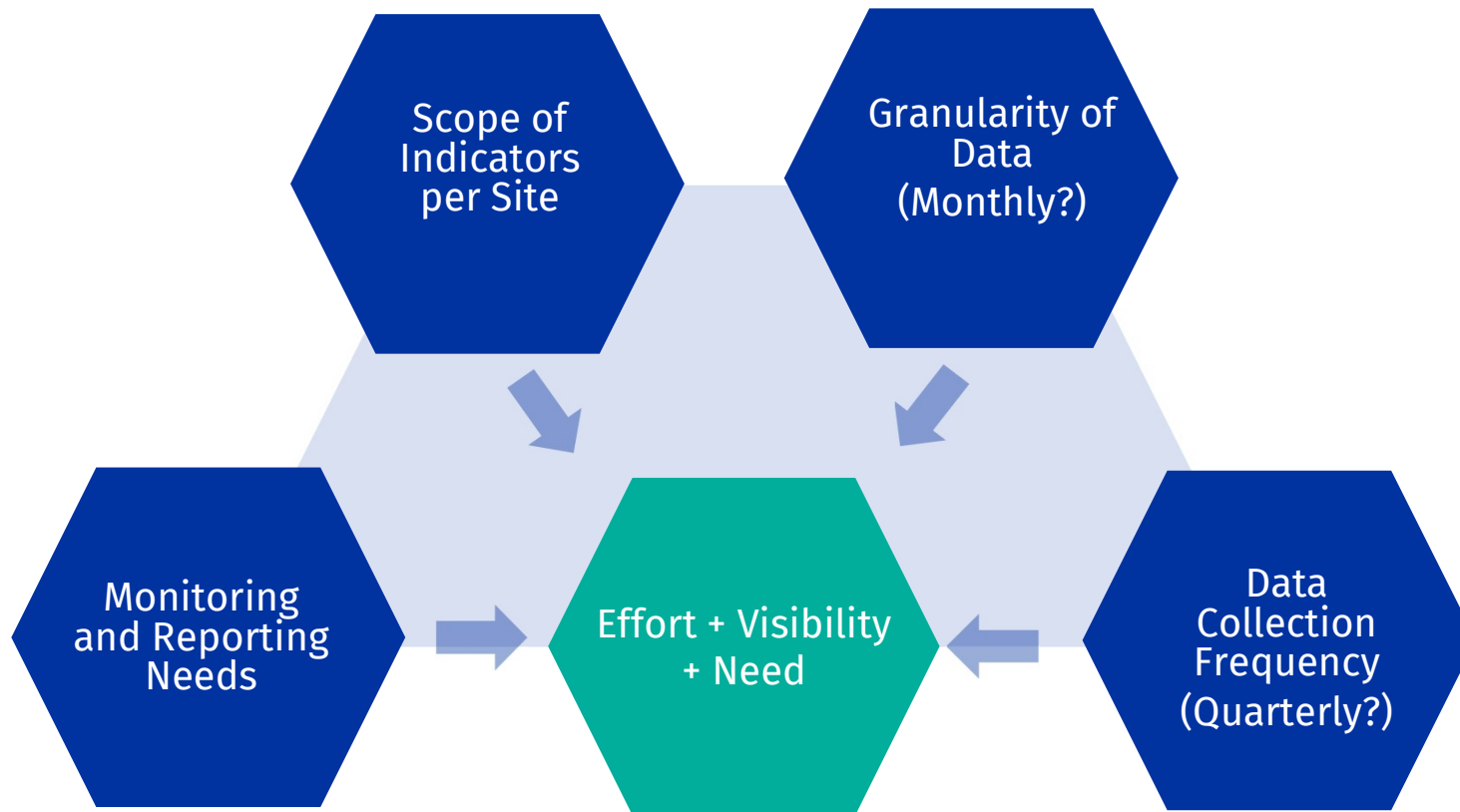


How many have public internal dashboards for ESG/Sustainability?



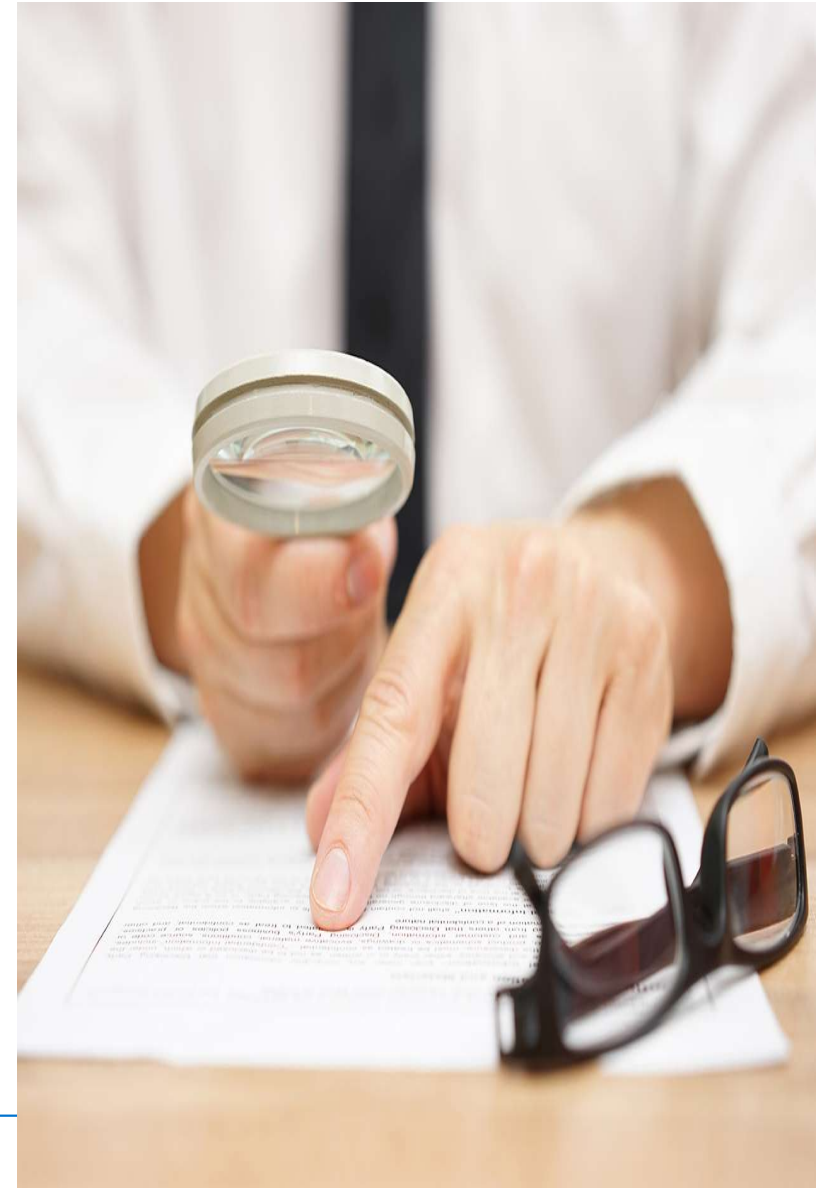
# Data Collection

*Challenges and Experiences with Data Collection*








# Data Validation and Verification

- ▶ Validation processes
- ▶ Update / Edit processes for estimated or erroneous data
- ▶ Evidence/verification documentation
  - Uploads
  - Pictures
  - Integrations with Utility Management Software!



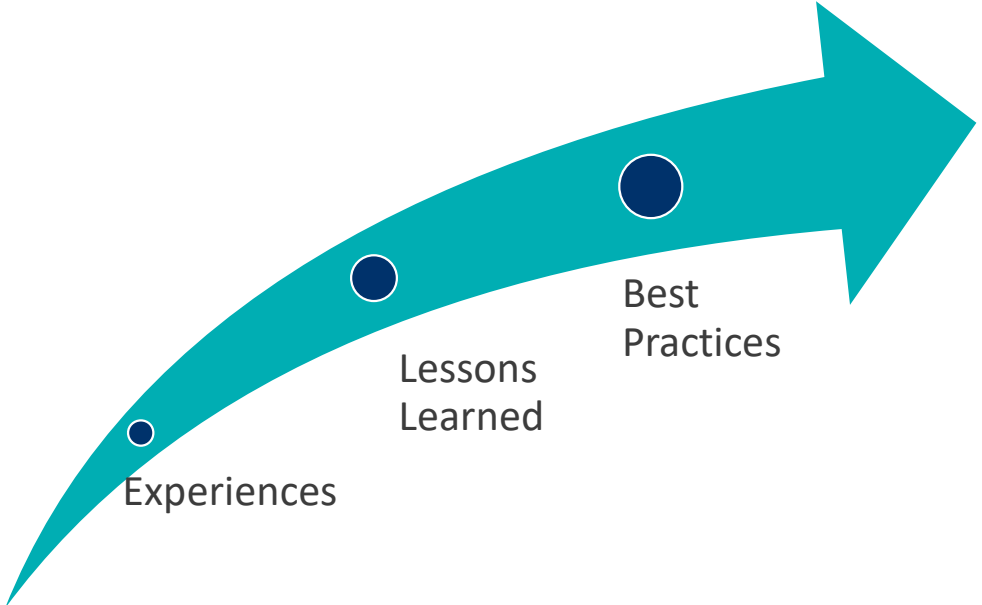
# How to Start Digitizing

Trinity's technical approach for establishing GHG reduction targets includes the following steps:

-  Establish Needs
-  Evaluate and Streamline Processes
-  Select Software
-  Implement Software
-  Analyze, Communicate, Revise



# Digitizing ESG: Lessons and Best Practices



# Key Take Aways

## ESG Strategy and Targets

- ▶ ESG is Driven by Financial Sector
- ▶ Sustainability and ESG Data is under a microscope
- ▶ Scope 3 emissions are becoming a focus

## Sustainability Data Management

- ▶ Volume, Velocity and Variability of ESG Data collection → ESG Software
- ▶ Data validation is more than double checking – it's documentation
- ▶ Managers can use Ratios and other figures to help sense check data across sites etc.



## Questions | Discussion



## Contact Us

**Meghan Foley, Trinity Consultants**

Mobile: 248-672-5670

Email: [mfoley@trinityconsultants.com](mailto:mfoley@trinityconsultants.com)

**Scott Walton, Saint-Gobain**

Mobile: (859) 512-6495

Email: [scott.walton@saint-gobain.com](mailto:scott.walton@saint-gobain.com)



**What are other industry groups doing?**



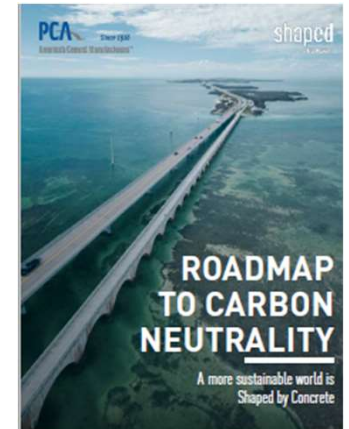
# What are other Industry Groups doing?

- ▶ Establishing Sustainability Committees
- ▶ Developing industry-level transition plans for low carbon economy
- ▶ Tracking evolving policy/legislation and providing comments
- ▶ Providing guidance to members for consistent reporting across the industry
- ▶ Developing industry-wide EPDs
- ▶ Preparing messaging on Industry's Sustainable Practices

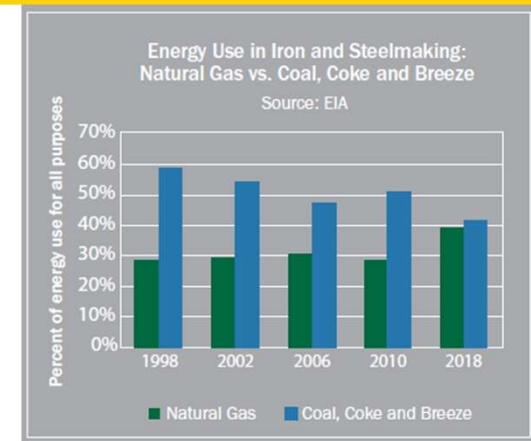


**ALUMINIUM SECTOR  
GREENHOUSE GAS  
PATHWAYS TO 2050**

PARAMETERS



## FACTS ABOUT AMERICAN STEEL SUSTAINABILITY



## Biographical Information

**Meghan Foley, Principal Consultant**  
**Trinity Consultants**  
**2075 W. Stadium Blvd. Ste. 1869, Ann Arbor, MI 48103**  
[mfoley@trinityconsultants.com](mailto:mfoley@trinityconsultants.com)

Meghan Foley is a Principal Consultant with Trinity Consultant's Digital Solutions Group. She has 15 years' experience in EHS compliance and software implementation consulting. Meghan is a recognized leader in the EHS+ESG information software space, with a focus on Compliance Assurance and Performance Management. Meghan has worked in North America, and 11 different countries, delivering EHS regulatory compliance management and digital solutions. Her experience spans the automotive, manufacturing, pharmaceutical, chemical, oil and gas, and other sectors.

---

**Scott W. Walton, CHMM, SGNA Regional EHS Manager**  
**Saint Gobain North America**  
**5145 Mary Ingles Hwy., Silver Grove, KY 41085**  
[scott.walton@saint-gobain.com](mailto:scott.walton@saint-gobain.com)

Scott Walton (CSP, CHMM) is the Regional EHS Manager for Saint-Gobain North America and has 32 years of EHS experience. Scott has broad experience in EHS Management Systems, safety training, risk management, industrial hygiene, environmental compliance, permitting, remediation, inspections and auditing, and sustainability. He has spent 15 years in Cincinnati in consulting prior to joining the building materials manufacturing industry. He has served in multiple roles serving various industries with EHS compliance and continuous improvement. Currently supporting manufacturing plants across all of North America.